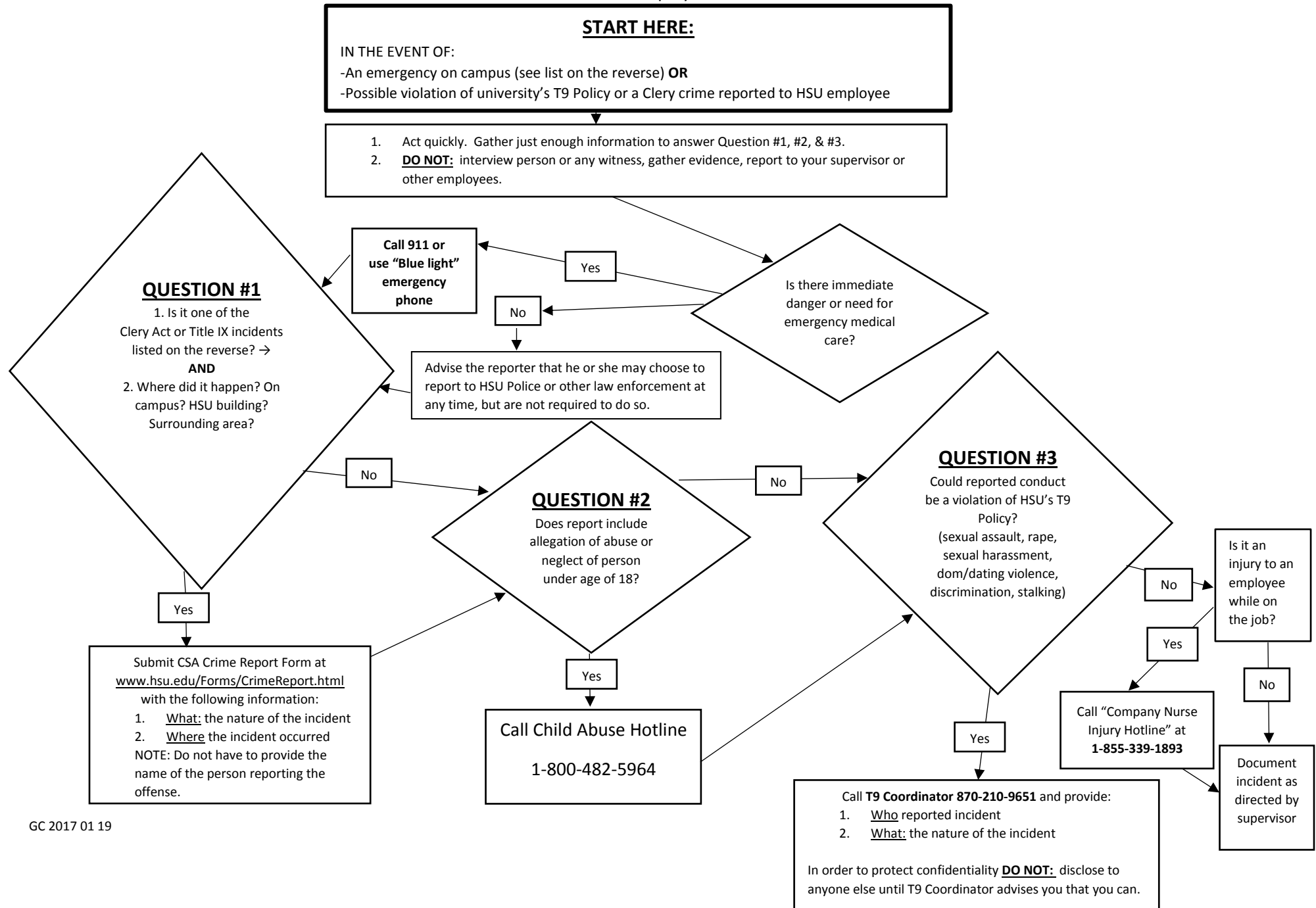


Henderson State University
Emergency, Title IX and Clery Response Flowchart
For Employees



Clery Act and Title IX Incidents

- Sexual assault including rape
- Possible sexual contact with an individual who is unable to consent because of intoxication or age
- Stalking
- Dating violence/Domestic Violence
- Sexual exploitation
- Sexual harassment
- Incest
- Fondling
- Other sexual misconduct (please refer to the Policy Prohibiting Sex-and Gender-Based Discrimination, Harassment, Misconduct and Retaliation, also referred to as the "T9 Policy")
- Murder/Non-negligent Manslaughter
- Negligent Manslaughter
- Robbery
- Aggravated Assault
- Burglary
- Motor Vehicle Theft
- Arson/Suspicious Fire

Hate crimes

- Larceny (theft), if motivated by bias
- Simple assault, if motivated by bias
- Intimidation, if motivated by bias
- Destruction/damage/vandalism of property, if motivated by bias

What Constitutes an Emergency on Campus?

A person experiencing:

- Loss or sudden change of consciousness or responsiveness
- Inability to communicate or sudden slurred speech
- Chest pain or pressure
- Seizure
- Severe abdominal pain
- Uncontrolled bleeding
- Difficulty breathing or shortness of breath
- Head or neck injury
- Suspected drug or alcohol overdose
- Collapse
- Major injuries such as gunshot or stab wounds or severe injuries from a vehicle accident
- Any medical or psychiatric condition that may risk death or serious impairment if person does not receive immediate medical attention

A person on campus threatening others with physical harm (i.e. brandishing a weapon).

An armed person on campus

Fire

IF YOU ARE UNCERTAIN, CALL 911

Active Shooter *If you hear shots fired on campus or if you witness an armed person shooting or threatening people, follow the **Run, Hide, or Fight** protocol.)